

Portal

Childcare Management

Welsh Government Funded:

Level 4 Professional Practice and Preparing for Leadership and Management in Children's Care, Play, Learning and Development (CCPLD)

Portal



City & Guilds



L4 Professional Practice and Preparing for Leadership and Management in Children's Care, Play, Learning and Development

Aim: To develop the knowledge and skills required for professional practice within childcare or health settings and to develop key knowledge and understanding in the principles which underpin leadership and management in the Childcare sector.

Who is this qualification for?

This is for individuals:

- Working with families and children under the age of 8 in regulated childcare settings
- Who wish to develop their knowledge and skills and become advanced practitioners or leaders and managers within the sector.
- Who have considerable experience (and already have a qualification at level 3) in children's care or early years practice.
- Who have a management role or be undertaking leadership or management activities to provide the evidence required for the competence qualification.

How is the qualification assessed?

Learners are expected to complete a variety of tasks to demonstrate their competence and knowledge. Feedback will be provided throughout the course and the summative assessment which is externally and internally assessed comprises:

- A portfolio of evidence
- A project, that includes a series of written tasks, direct observation of practice and a professional discussion
- A series of tasks, involving both oral and written responses
- A project that contains a series of tasks based around a proposed change to practice – this is externally assessed

Enrolment Process

- Completion of application form
- Initial assessment to include:
 - literacy
 - numeracy
- Skill scan
- Discussion with employer and assessor
- Induction with your designated assessor

Course Duration

Up to 18 months

Welsh medium delivery information

As a proud bi-lingual company, we are also able to offer Welsh delivery. All resources produced by Portal are available through the medium of Welsh, however where a Welsh equivalent does not exist websites and published reading materials are only available through the medium of English.

How is the qualification delivered?

All learners are allocated an assessor to support them with the completion of the qualification. Resources will be provided which contain tutorials, teaching resources and activities, to deliver the knowledge requirements.

The guided study will be supported via regular 1-2-1 meetings between assessors and learners to consolidate learning and to plan and review tasks and assessments.

Assessors will be able to work flexibly however and deliver to group sessions should the need arise.

Due to current guidance the meetings/sessions will be carried out virtually however face to face or a hybrid model is possible.

Units for Level 4 Professional Practice in Children's Care, Learning and Development

Mandatory Units

Leading child centred practice

Study skills

+ One of the following 3 units

Working with families and carers to develop parenting skills

Working with children with speech, language and communication needs (SLCN)

Recognising and supporting children with additional learning needs (ALN)

Units for Level 4 Preparing for Leadership and Management in Children's Care, Play, Learning and Development

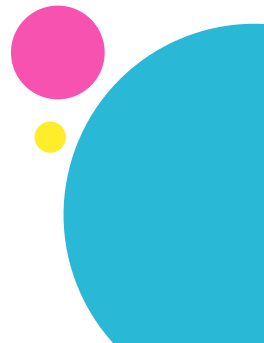
Mandatory Units

Leading child-centred practice

Theoretical frameworks for leadership and management

Understand how to lead and manage effective team performance

Essential Skills	Method of Assessment
Communication – Level 2	Controlled task and test
Application of Number - Level 2	Controlled task and test



Learner Benefits

The qualification allows learners to progress their employment opportunities or to continue to further study at a higher level
Develop and demonstrate that they understand and apply in practice a range of leadership and management concepts, theories and techniques

Can reflect on their own and others' knowledge, leadership and management styles and understand how these impact on those they work with, both within and outside of their setting.

Employer Benefits

Leaders and managers that use child-centred approaches in practice

Leaders and managers that improve the service and performance within children's care, play and learning.

Next Steps

To request more information or to schedule an information session with our advisor please get in touch:

Frances Lee

07958 669560 frances.lee@portaltraining.co.uk

Shawn Staples

07706 330206 shawn.staples@portaltraining.co.uk

